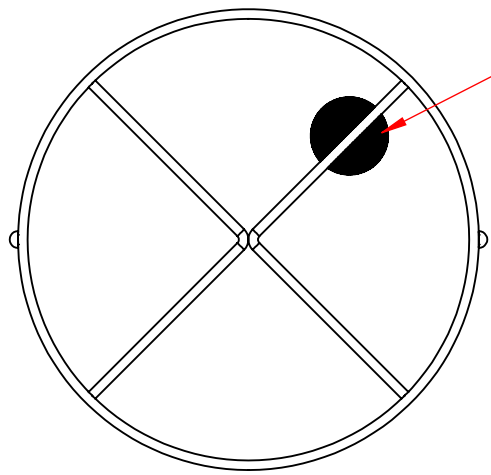
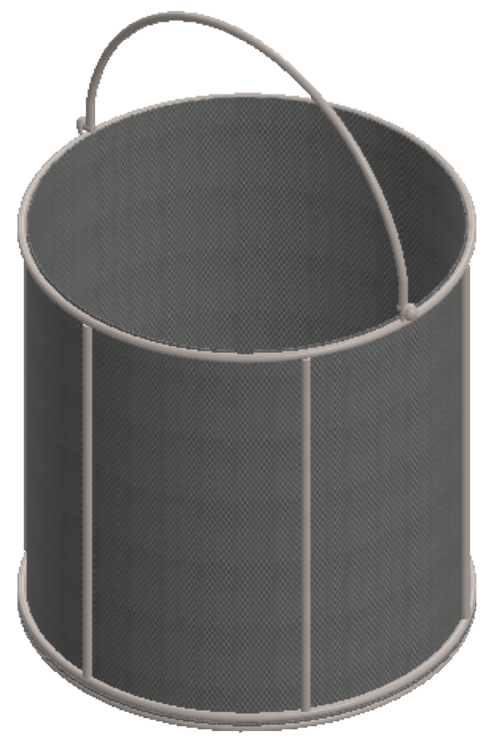
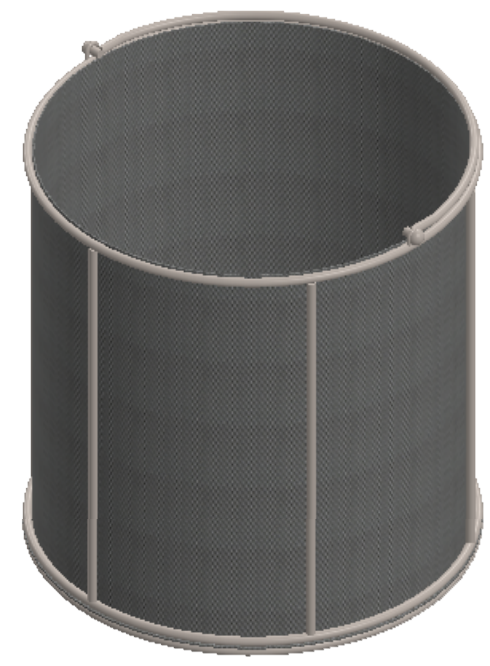


$\phi \frac{1}{4}$ "
Rod Frame



Lined Bottom and Sides with
30 Mesh x .012" Woven Wire
(.021" Openings, 40% Open Area)



UNLESS OTHERWISE SPECIFIED:

DIMENSIONS ARE IN INCHES
TOLERANCES:
FRACTIONAL $\pm 1/16$ "
ANGULAR: ± 5 DEG.
TWO PLACE DECIMAL ± 0.03
THREE PLACE DECIMAL ± 0.015

EST WGT
4.2 lbs.

MATERIAL
304 Stainless Steel

FINISH
Natural

DO NOT SCALE DRAWING

Round Wire Mesh Basket: 12Dia. x 12H,
304 SS, 1/4 Rod Frame, Swinging Round
Loop Handle, Mesh: 30 x .012

PROPRIETARY AND CONFIDENTIAL
THE INFORMATION CONTAINED IN THIS
DRAWING IS THE SOLE PROPERTY OF
THREE M TOOL. ANY REPRODUCTION IN
PART OR AS A WHOLE WITHOUT THE
WRITTEN PERMISSION OF THREE M TOOL
IS PROHIBITED.

SIZE **B** DWG. NO.
TMT-120RND120-C30S

SCALE: 1:5

SHEET 1 OF 1